






Talus | Lot 14


Trail Series



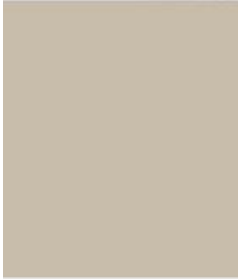
-  1 Bed
-  1 Bath
-  481 Sq. Ft.
-  97,250 + Tax




white cabinets in kitchen, master bedroom & living room




rye cabinets in master bathroom



shiitake paint throughout




retrospace succulent backsplash




aspen vinyl flooring



windgust shower



wilsonart marmo bianco countertops



olive exterior siding

NOTE: Renderings and color selections are for example only. Buyer is responsible for verifying selections and order details prior to purchasing.

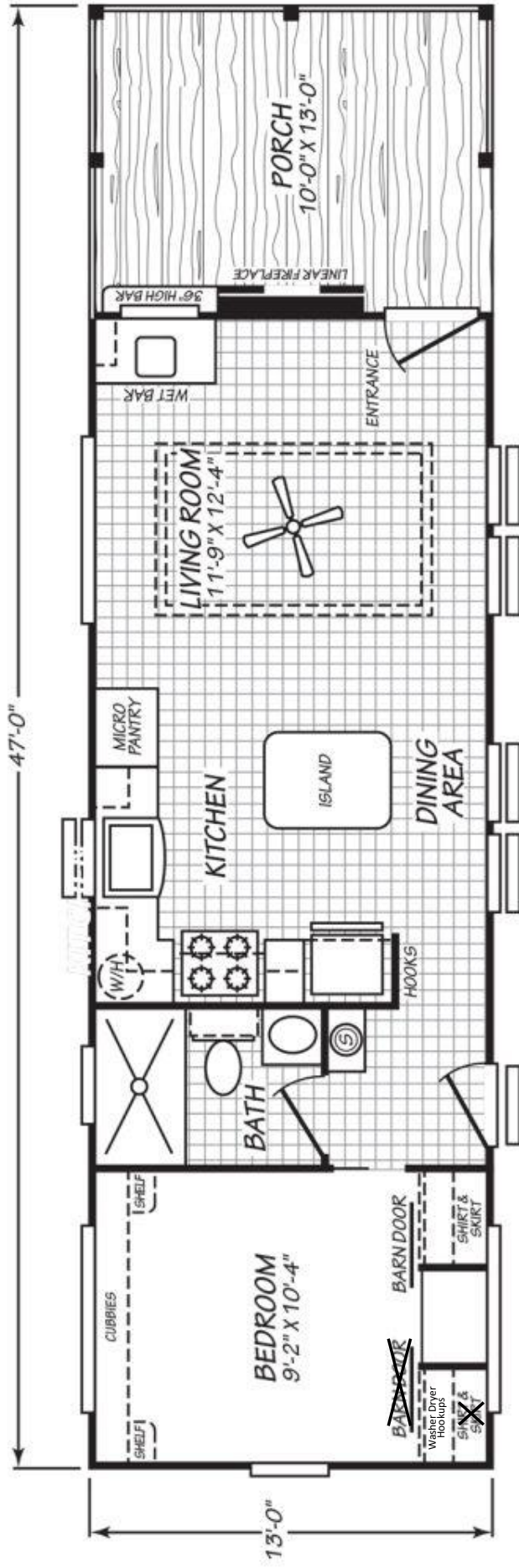
GET IN TOUCH

(256) 274-1150
sales@sanctuaryatgreenmountain.com



Talus | Lot 14

Trail Series



GET IN TOUCH

(256) 274-1150

sales@sanctuaryatgreenmountain.com



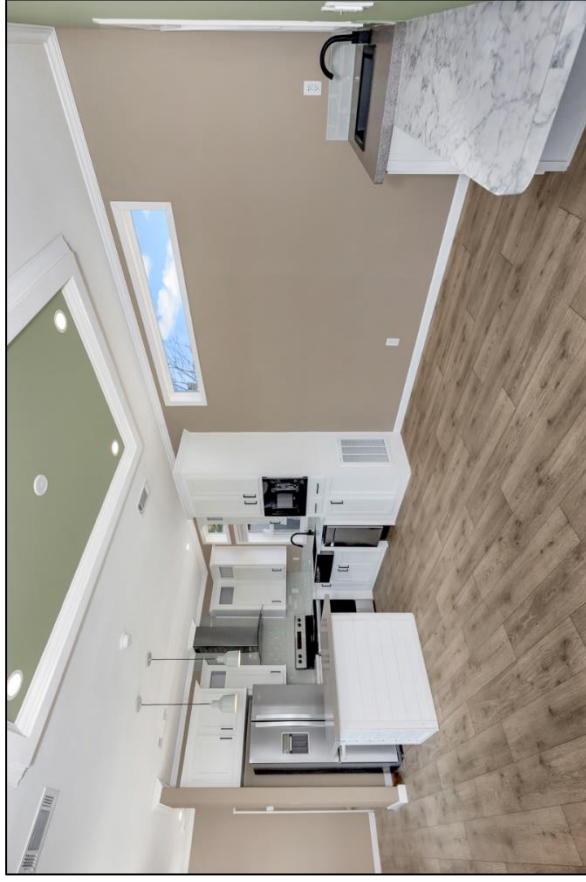


Talus

Lot 14



Trail Series



GET IN TOUCH

(256) 274-1150

sales@sanctuaryatgreenmountain.com

Sanctuary
at Green Mountain

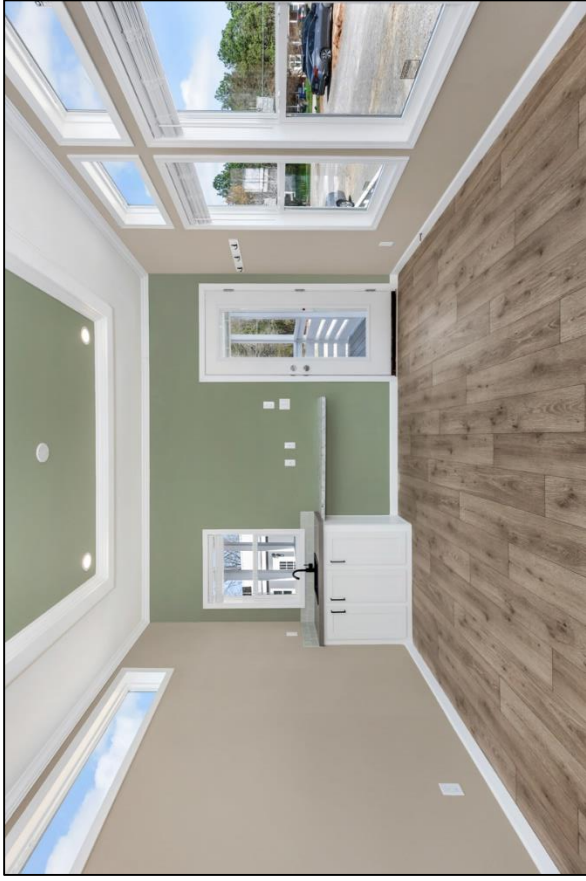


Talus

Lot 14



Trail Series



GET IN TOUCH

(256) 274-1150

sales@sanctuaryatgreenmountain.com

Sanctuary
at Green Mountain

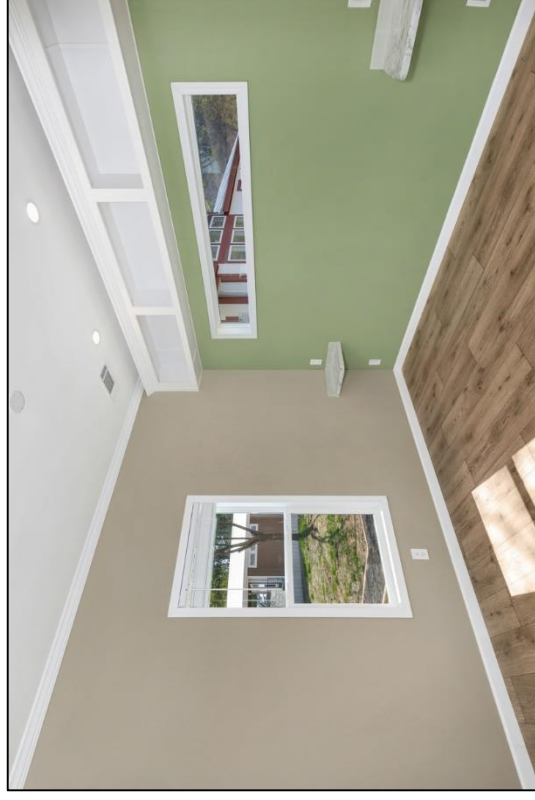
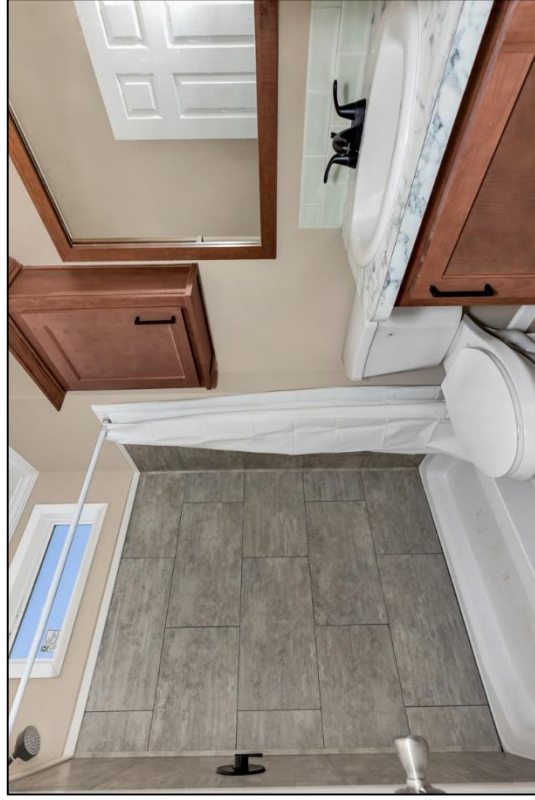


Talus

Lot 14



Trail Series



GET IN TOUCH

(256) 274-1150

sales@sanctuaryatgreenmountain.com

Sanctuary
at Green Mountain



STANDARD FEATURES

TRAIL SERIES

(STONEFLY, TALUS, RANGER MODELS)

CONSTRUCTION

- Chassis - 10" I-Beam
- Floor Decking - OSB Tongue & Groove
- Floor Frame – Bottom Board – Poly
- Floor Joist - 2" x 6" @ 16" on center
- Interior Walls - 2 x 3 & 2 x 4 w/1" Bottom & 1" Top Plate
- Sidewalls - 108"
- Sidewalls - 2" x 4" @ 16" on center
- Window - Insulated without Grids
- 10' front porch with privacy wall and fireplace

INSULATION

- Ceiling – R30
- Exterior Wall – R11
- Floor – R11

UTILITIES

- Ducts Overhead - R6 Computemp
- Exhaust Fan - Whole House
- Exhaust Fan without Light – Baths
- Return Air – Sealed

ELECTRICAL

- 200 amp Electrical Service
- Exterior GFI Receptacle
- Interior Rocker Switches Throughout
- TV Jacks

BATHROOM

- Faucet - Anti-Scald in Tub/Shower; Single Lever in Lavatory
- Mirror over Lavatory Trimmed with 2" Stiles
- Shower Rod & Plastic Curtain
- Elongated Toilet
- China Lavatory Sink
- Towel Bar & Tissue Holder
- Laminate Countertop
- 36" High Cabinets
- 4" Tile Backsplash
- LED Light over Lavatory

BEDROOM

- Closet with Chest – Split
- Overhead cabinet with cubbies
- Bedside Shelves

ROOF

- Exterior – Soffits – Vented
- Fascia – Cementitious
- Overhang – Sides – 4"
- Rafters – 5 1/2" Heeled Truss @ 24" on Center
- Metal Roof
- Roof – Sheathing 7/16" OSB
- Roof Pitch – 4:12
- Roof Type – Flat Truss

NOTE: Standard features are subject to change.



STANDARD FEATURES

TRAIL SERIES

(STONEFLY, TALUS, RANGER MODELS)

PLUMBING

- Smoke Detector
- Vinyl Exterior Water Heater Door
- Kitchen Faucet - Dual Control Gooseneck without Sprayer
- Kitchen Sink - Deep Stainless Steel
- Water Lines – PEX
- Water Shut Off Valves - Sink & Toilet
- Water Heater - 20 Gallon Electric

INTERIOR

- Ceiling Fan – Wire and Brace Only
- Lights – LED Throughout
- Vertical Blinds for Patio Door
- 1” Blinds throughout
- 9’ Flat Ceiling
- Coffered Ceiling in Living Room
- Knockdown Textured Ceilings
- 6 Panel Interior Doors Throughout
- Bi-Fold Closet Doors
- Wall-Mounted Door Stops
- Vinyl Floors Throughout
- Beadboard Panel Walls per Floorplan
- 3” Baseboard and Cove Molding in all Drywall Areas
- Tape & Texture Walls per Floorplan
- Picture Frame Trim above Entertainment Center
- VOG Wall Panels per Floor Plan
- 2” White Stile Window Trim
- Wood Valances Throughout
- Entertainment Center in Living Room

KITCHEN

- Base Cabinet - Drawer Bank in Kitchen (1)
- Cabinet Doors – Shaker Hardwood Doors & Wrapped Stiles
- Cabinet Interiors – Finished to Match (Except Dr Backs & Drawers)
- 3/4” Cabinet Stiles
- Laminate Countertops
- Self Edge Countertop Edges
- Cove Molding at Kitchen Cabinet Tops
- Overhead Cabinets - Finished Bottoms
- 4” Tile Backsplash
- Island with 1x6 T&G Accent (Talus and Ranger Models Only)

APPLIANCES

- Appliances – Black
- Microwave – with Trim Kit
- Range Hood – Glass – B

EXTERIOR

- Exterior – Sheathing – 7/16” OSB – All Sides
- Exterior Trim – Lineals – All Windows in lieu of Shutters
- Siding – House Wrap & Vinyl (Dutch Lap Profile)
- Ceiling Fan – Wire and Brace Only
- Front & Rear Exterior Light – Black Seeded Glass
- Exterior Door - 32”, 9 Lite Rear Out-Swinging Door with Deadbolt
- Exterior Door - Patio Vinyl Low E 6’ x 6’8” without Grids
- Perimeter Skirting
- Deck with Stairs off of Back Door
- Heat Pump

NOTE: Standard features are subject to change.



INCLUDED UPGRADES

LOT 14: TALUS

INSULATION

Floor – R22

PLUMBING

Black Plumbing Package

Hose Bibb – Frost Free

LIGHTING

Black Lighting Package

Exterior Black Farm Light

Ceiling Fans Wire & Braced: Bedroom, Living Room & Porch

LED Light over Shower

Gray Pendant Light over Kitchen Island

INTERIOR

Accent Walls: Living Room Entertainment Center & Ceiling and Bedroom

BATHROOM

DumaWall Faux Tile Shower

Frameless Glass Enclosure Shower with Clear Glass

Raised Toilet – Comfort Height

Overhead Cabinet – Toilet Topper

KITCHEN

Black Farm Sink

Black Cabinet Pulls

Island with Accent: 1x6 Tongue & Groove

Tile Backsplash Behind Range to Cove

APPLIANCES

18" Stainless Steel Dishwasher

Refrigerator – 20 cu. Ft. French Door – Bottom Freezer – Stainless

EXTERIOR

Exterior Door – ½ Lite 32" with interior blinds

ELECTRICAL

GFI Receptacles above fireplace and at porch endwall

BEDROOM

Barn Door